

## Injection Moulded Pucks



### Design features:

- Lightweight cost effective components.
- Orientation pucks.
- Label in puck.
- Base coding in puck.
- Durable materials with high chemical resistance.
- Injection moulding allows greater design flexibility.
- Low co-efficient of friction.
- All containers can be given a common neck height, eliminating nozzle height adjustment on changeovers.
- Unusual shaped and unstable containers are given maximum stability, allowing higher line speeds.
- Changeover times greatly reduced.

# Barry-Wehmiller

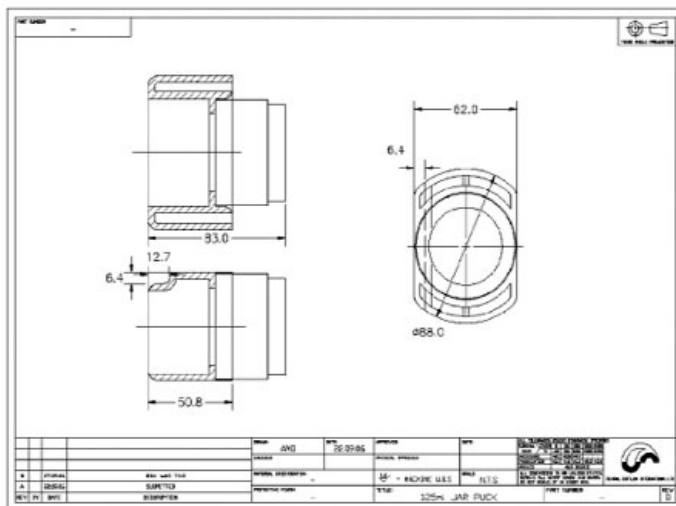
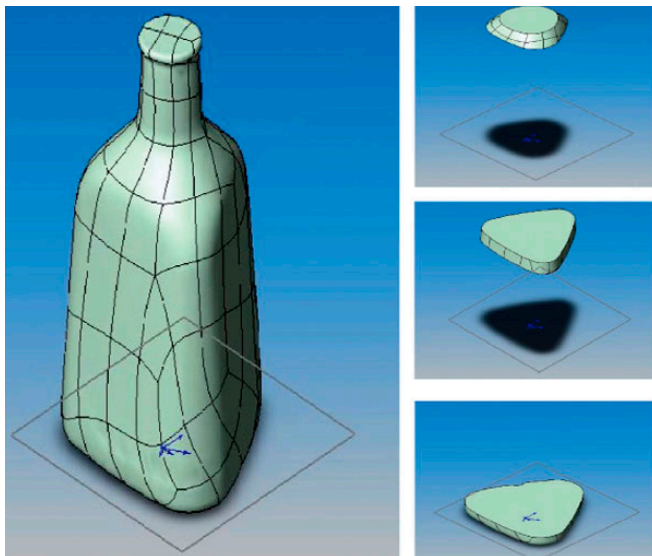
# Injection Moulded Pucks

*Puck technology can help when new containers are introduced to your packaging line by simply removing one set of pucks and replacing them with another.*

Pucks eliminate most of the costs for individual machine container change parts and eliminates and/or minimizes line adjustments related to container changes (i.e. guide rail adjustments, timing screw/ star wheel changes and machine height adjustments).

This will significantly reduce the downtime associated with container changeovers and significantly reduce the time it takes to ramp up to the maximum rated line speed.

Pucks offer manufacturing the ability to handle virtually any shape container efficiently. Pucks also allow marketing the ability to be creative in their packaging design, potentially creating new markets and opportunities.



Our in-house design team will send you a drawing showing the container positioned inside the puck.

- When the drawing is approved we will submit samples of the puck for your approval.
- When the samples are approved we rapidly produce the full set of pucks and dispatch to your site.

We have a large inventory of existing tooling for a variety of outside shapes and sizes, helping keep costs to a minimum.

**FleetwoodGoldcoWyard**



Plumtree Farm Industrial Estate, Bircotes • Doncaster, South Yorkshire, DN11 8EW • +44 (0) 1302 711056

• Loveland, CO  
970/663-4770

• Lino Lakes, MN  
651/464-4000

• St. Albans, England  
+44 1727 836101

• Chicago, IL  
630/759-6800

• Hunt Valley, MD  
410/785-1934

• Lynchburg, VA  
434/582-1200

www.centralbottling.com • www.FGWA.com • CBIsales@fgwa.com